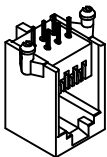


Modular Jack



Features:

- * UL recognized, CSA listed.
- * 50 μ gold meets FCC 68 requirements.
- * Available in 4, 6, 8 position housing.
- * Industry compatible profiles and foot prints.
- * Available in selective loading.
- * Contact pre-loaded and self aligned.

Material:

Housing: 30% Glass filled PBT UL94V-0.

Contacts: Phosphor Bronze.

Plating: Gold plated on contact area over Nickel.

Electrical Characteristics:

Current Rating:2 AMP.

Insulator Resistance:5000MΩmin. at DC 500V.

Contact Resistance: 30mΩmax. at DC 100mA.

Operating Temperature: $-55^{\circ}\text{C} \sim +105^{\circ}\text{C}$.

Capacitance: 1.5pF max between adjacent contacts.

Mechanical Characteristics:

Durability: 250 cycles.

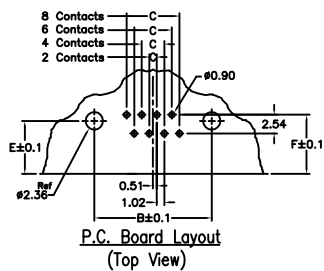
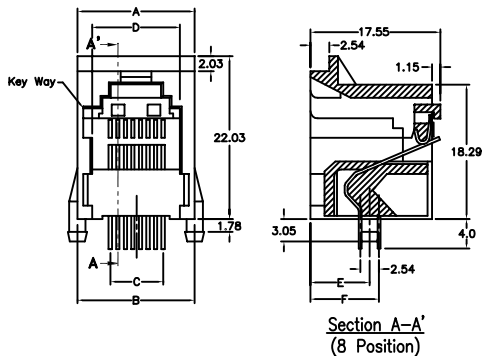
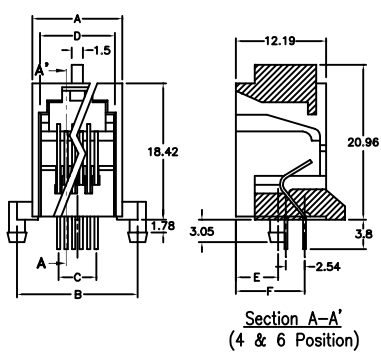
Retention Force: 7.7kg between jack & plug.

Max Total Mating Force: 2 contacts loaded—350g.

4 contacts loaded—500g.

6 contacts loaded—750g.

8 contacts loaded-900g.



No. of Position	No. of Contacts	Dimensions					
		A	B	C	D	E	F
4	4	12.19	15.88	3.06	7.80	5.72	8.87
6	2	12.19	15.88	1.02	10.15	5.72	8.87
6	4	12.19	15.88	3.06	10.15	5.72	8.87
6	6	12.19	15.88	5.10	10.15	5.72	8.87
8	8	15.88	15.88	7.14	11.88	8.00	8.84

Ordering information

5007

Series

8

8: 8 Position Housing

6: 6 Position Housing

4: 4 Position Housing

8

8: 8 Contacts Loaded

6: 6 Contacts Loaded

4: 4 Contacts Loaded

2: 2 Contacts Loaded

/50

50: 50 μ " Gold Plated

30: 30 μ " Gold Plated

15: 15 μ " Gold Plated

6: 6 μ " Gold Plated

GRY

GRY: Grey

BLK: Black